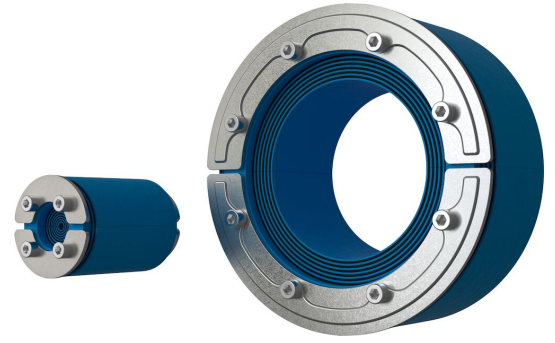




# Roxtec Dichtung RS OMD

Außen anpassbare Durchführung für nicht genormte Mantelrohre.

Roxtec RS OMD ist eine Abdichtung für Einzelkabel oder -rohre in Metallmantelrohren. Die Einführungsabdichtung besteht aus zwei Hälften mit entfernbarer Schichten für die Anpassung an verschiedene Kabel- und Rohrgrößen. Die Durchführung besitzt für die Anpassung an nicht genormte Mantelrohr- und Öffnungsgrößen auch außen Schichten. Der Aufbau der Durchführung erleichtert den Einbau um vorhandene Kabel und Rohre.



- Beständig gegen Nagetierverbiss
- Perfekt für die Nachrüstung
- Schnelle und einfache Installation

## Produkteigenschaften



Feuerhemmend



Wasserdicht



Gasdicht

## Aufbau der Installation



Metall



Beton

## Montagetyp



Bestehende Öffnung



Vorhandenes  
Mantelrohr

## Klassifizierungen und Zertifikate

### Feuer

- KLASSE A gemäß IMO 2010 FTP Code
- E/EI-Klassifizierung gemäß EN 13501

### Dichtigkeit

- Gas: 2,67 Bar (Katastrophenfall)
- Wasser: 4 bar (Katastrophenfall)

## Daten der Abdichtungskomponenten

### Dichtkomponenten



Roxtec-Dichtungen RS OMD



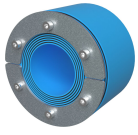
Gleitmittel

Weitere Informationen finden Sie unter [www.roxtec.com](https://www.roxtec.com).

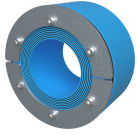


# Vorkonfigurierte Durchführungs-Kits

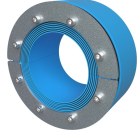
mm/kg



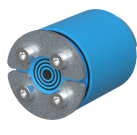
RS 100 OMD AISI316  
WOC



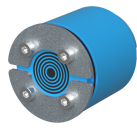
RS 125 OMD AISI316  
WOC



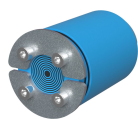
RS 150 OMD AISI316  
WOC



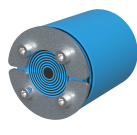
RS 25 OMD AISI316



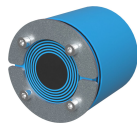
RS 31 OMD AISI316



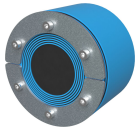
RS 43 OMD AISI316



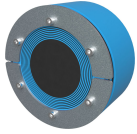
RS 50 OMD AISI316



RS 68 OMD AISI316



RS 100 OMD AISI316



RS 125 OMD AISI316

Title	Konfiguration	Öffnungsmaße Ø	Gewicht	Art. Nr.
RS 100 OMD AISI316 WOC	1x (48.0-70.0)	101 - 108	1	RSO0001001021
RS 125 OMD AISI316 WOC	1x (66.0-98.0)	126 - 143	1.6	RSO0001251021
RS 150 OMD AISI316 WOC	1x (93.0-119.0)	151 - 168	2	RSO0001501021
RS 25 OMD AISI316	1x (3.6-12.0)	26 - 30	0.08	RSO0100251021
RS 31 OMD AISI316	1x (4.0-17.0)	32 - 35.5	0.09	RSO0100311021
RS 43 OMD AISI316	1x (4.0-23.0)	44 - 51	0.32	RSO0100431021
RS 50 OMD AISI316	1x (8.0-30.0)	51 - 58	0.41	RSO0100501021
RS 68 OMD AISI316	1x (26.0-48.0)	69 - 76.5	0.6	RSO0100681021
RS 100 OMD AISI316	1x (48.0-70.0)	101 - 108	1.2	RSO0101001021
RS 125 OMD AISI316	1x (66.0-98.0)	126 - 143	2	RSO0101251021

The product information provided by Roxtec does not release the purchaser of the Roxtec system, or part thereof, from the obligation to independently determine the suitability of the products for the intended process, installation and/or use.

Roxtec gives no guarantee for the Roxtec system or any part thereof and assumes no liability for any loss or damage whatsoever, whether direct, indirect, consequential, loss of profit or otherwise, occurred or caused by the Roxtec systems or installations containing components not manufactured by an authorized manufacturer and/or occurred or caused by the use of the Roxtec system in a manner or for an application other than for which the Roxtec system was designed or intended.

Roxtec expressly excludes any implied warranties of merchantability and fitness for a particular purpose and all other express or implied representations and warranties provided by statute or common law. User determines suitability of the Roxtec system for intended use and assumes all risk and liability in connection therewith. In no event shall Roxtec be liable for indirect, consequential, punitive, special, exemplary or incidental damages or losses.

The Roxtec products are offered and sold in accordance with the conditions of the Roxtec General Terms of Sales. The latest version of the Roxtec General Terms of Sales can be downloaded from <https://www.roxtec.com/en/about-us/about-roxtec/general-terms-of-sales/>

We reserve the right to make changes to the product and technical information without further notice. Any errors in print or entry are no claims for indemnity. The content of this publication is the property of Roxtec International AB and is protected by copyright.

This document was generated on: 2024-04-05